



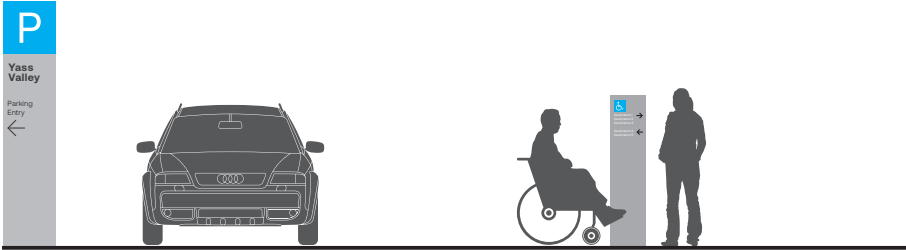
Extrablack

Signage hierarchy

01



WAYFINDING



WF1 **Precinct Vehicular Directional**
WF1.A: Precinct Vehicular Directional–Entry

WF2 **Freestanding Directional Totem**
WF2.A: External Freestanding



WF3 **Wall Mounted Directional**
WF3.A: Wall Mounted Directional



WF4 **Precinct Block Wayfinding – Optional**
WF4.A: Precinct Block Wayfinding



WF5 **Accessible Directional**
WF5.A: Accessible Directional



WF6 **Armway Block ID**
WF6.A: Armway ID Flag Wall Mounted



WF7 **Armway ID**
WF7.A: Armway ID Signage
WF7.B: Armway ID Totem & Double Wall Mounted



WF8 **Armway ID Internal**
WF8.A: Armway ID Signage
WF8.B: Armway ID Totem & Double Door Mounted



WF9 **Armway ID**
WF9.A: Armway ID Signage
WF9.B: Armway ID Totem
WF9.C: Accessible Totem

Issued for Review			
Revisions			
A	230224	RK	Issued for Review
B	130624	JS	Issued for Review
C	120724	RK	Issued for Tender
D	060225	RK	Issued for Review



Scale As shown at A3

Project
Yass Valley Council Crago Mill Precinct

Drawing title
GEN_Signage Hierachy_002

Drawn RK | **Checked** RP

Date
230224

Job number
YVC001

Drawing number
EB_YVC_DWG_0014

Signtype GEN | **Revision** D | **Sheet size** A3

ISSUED FOR REVIEW

Reproduction of the whole or part of this document constitutes an infringement of copyright. The information ideas and concepts contained in this document are confidential. The recipient(s) of this document is prohibited from disclosing such information, ideas and concepts to any person without the prior written consent of Extrablack Pty Ltd.

Extrablack

Level 5
15 Foster Street
Surry Hills NSW 2010
Australia
T +61 2 8964 6258
extrablack.com.au

Operational Signs



Operational Sign
OP1A: Entry Information
(incl. Regulatory Requirements)
OP1B: Terms & Conditions
OP1C: Caution Sign Template



Operational Disc ID
OP2A: Landfill/Recycling
Organic Data
OP2B: GST A Symbol



Operational ID
OP3A: Litter Numbers

Statutory Signs



20mm Statutory Door Panel Template – Schedule Only
ST1A: 20mm Statutory Door



32mm Statutory Door Panel Template – Schedule Only
ST2A: 32mm Statutory Door



50mm Statutory Door Panel Template – Schedule Only
ST3A: 50mm Statutory Door

Statutory Signs



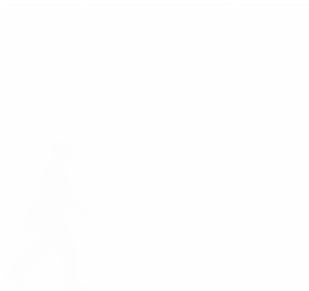
Statutory Exit
ST4A: Exit Sign (Red) – Different Exit
ST4B: Exit Sign (Red)
ST4C: Exit Sign (Red) – Right
ST4D: Exit Sign (Red) – Left
ST4E: Exit Sign (Red) – Right
ST4F: Exit Sign (Red) – Left
ST4G: Exit Sign (Red) – Right
ST4H: Exit Sign (Red) – Left



Statutory Door Panel
ST5A: Exit Sign (Red) (Door)
ST5B: Exit Sign (Red) (Door)
ST5C: Exit Sign (Red) (Door)



Statutory Blade
ST6A: Exit Sign (Red) (Blade)
ST6B: Exit Sign (Red) (Blade)
ST6C: Exit Sign (Red) (Blade)



Safety Strip Decal
ST7A: Safety Strip Decal
ST7B: Safety Strip Decal
ST7C: Safety Strip Decal
ST7D: Safety Strip Decal
ST7E: Safety Strip Decal
ST7F: Safety Strip Decal
ST7G: Safety Strip Decal
ST7H: Safety Strip Decal



Hearing Loop
ST8A: Hearing Loop (Loop)
ST8B: Hearing Loop (Loop)
ST8C: Hearing Loop (Loop)
ST8D: Hearing Loop (Loop)
ST8E: Hearing Loop (Loop)
ST8F: Hearing Loop (Loop)
ST8G: Hearing Loop (Loop)
ST8H: Hearing Loop (Loop)

Issued for Review			
Revisions			
A	230224	RK	Issued for Review
B	130624	JS	Issued for Review
C	120724	RK	Issued for Tender
D	060225	RK	Issued for Review



Scale As shown at A3

Project	
Yass Valley Council Crago Mill Precinct	
Drawing title	
GEN_Signage Hierarchy_003	

Drawn RK | Checked RP

Date	Job number
230224	YVC001
Drawing number	
EB_YVC_DWG_0015	

Signtype GEN | Revision D | Sheet size A3

ISSUED FOR REVIEW

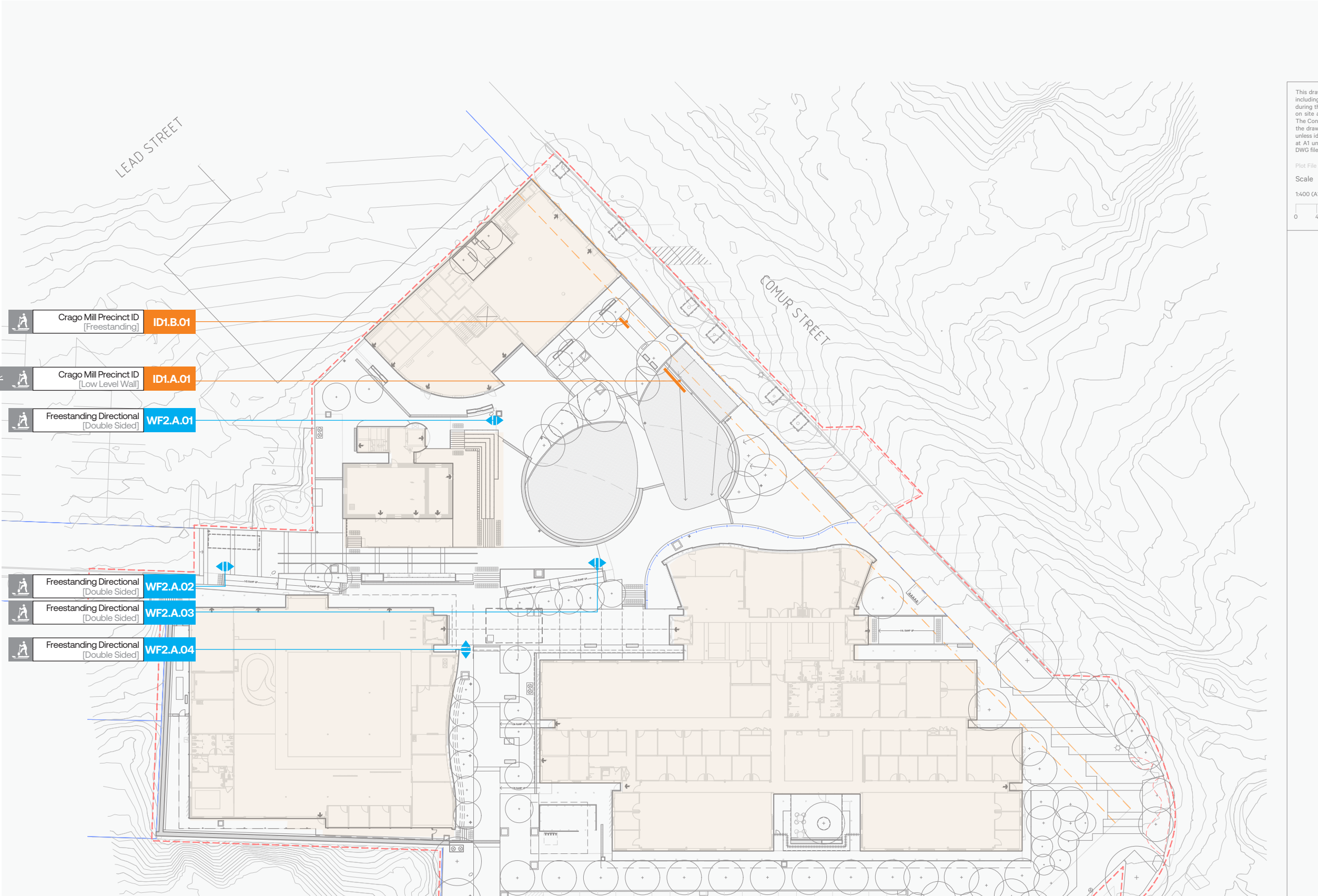
Reproduction of the whole or part of this document constitutes an infringement of copyright. The information ideas and concepts contained in this document are confidential. The recipient(s) of this document is prohibited from disclosing such information, ideas and concepts to any person without the prior written consent of Extrablack Pty Ltd.

Extrablack

Level 5
15 Foster Street
Surry Hills NSW 2010
Australia
T +61 2 8964 6258
extrablack.com.au

Signage masterplans

02



This drawing is for information only. It is not to be used for construction purposes. The Council is not responsible for any errors or omissions. The drawing is not to be used for any other purpose than the one for which it was prepared. The drawing is not to be used for any other purpose than the one for which it was prepared. The drawing is not to be used for any other purpose than the one for which it was prepared.

- Signtypes**
- ID

Identification

wall/door/glass mounted
- WF

Wayfinding

freestanding/wall mounted
- AM

Amenity ID

wall/door/glass mounted
- GR

Placemaking Graphics

wall/glass mounted

- Signage Requirements - By Others**
- Illumination**

Power Requirement to BMS/Operations
- Data**

Data Requirement to BMS/Operations
- Footings**

In ground

- Signs Not Masterplanned - By Others**
- OP

Operational Signage

Masterplanned by Brewster Hjorth
- ST

Statutory Signage

Masterplanned by Brewster Hjorth

NOTE

FINAL SET OUT OF ID1.A.01 AND ID1.B.01 DEPENDENT ON FINAL LOCATION OF S2 PRE-CAST SEATING WALL. BOTH SIGNS TO ALIGN WITH WALL.

Issued for Review

Revisions			
A	070624	TH	Issued For Review
B	240624	JS	Issued For Review
C	300724	RK	Issued For Tender
D	100225	RK	Issued For Review
E	180225	RK	Issued For Review

Client



Scale As shown at A3

Project

Crago Mill Precinct

Drawing title

Crago Mill Precinct Masterplans
Site – Level G

Drawn TH/CC/RK

Checked

RP

Date

160223

Job number

YVC001

Drawing number

YVC-SITE-EXT-SN-PLN-0000

Sign type MP

Revision E

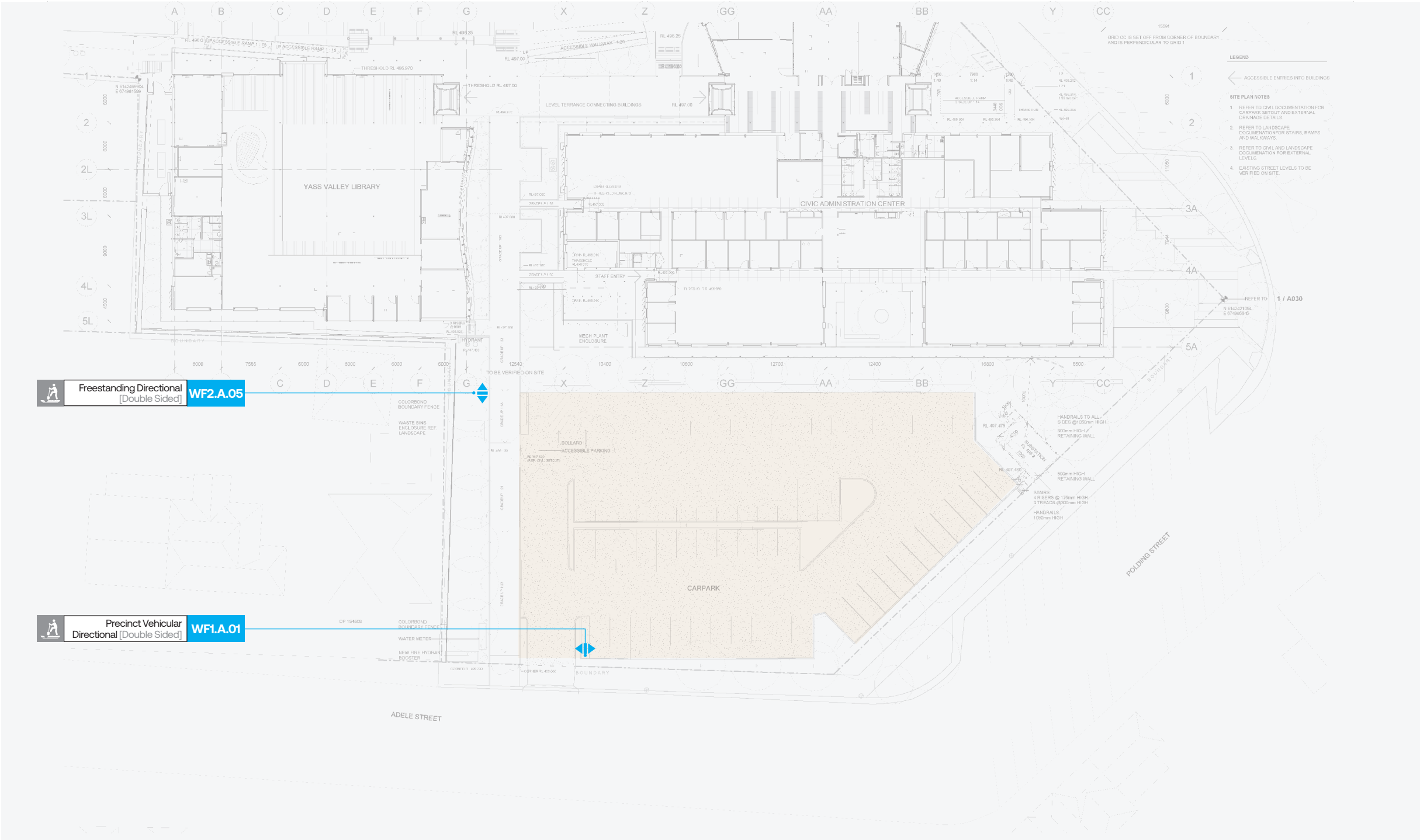
Sheet size A3

NOT FOR CONSTRUCTION

Reproduction of the whole or part of this document constitutes an infringement of copyright. The information ideas and concepts contained in this document are confidential. The recipient(s) of this document is prohibited from disclosing such information, ideas and concepts to any person without the prior written consent of ExtraBlack Pty Ltd.

Extrablack

Level 5
15 Foster Street
Surry Hills NSW 2010
Australia
T +61 2 8964 6258
extrablack.com.au



Signtypes

- ID Identification**
wall/door/glass mounted
- WF Wayfinding**
freestanding/wall mounted
- AM Amenity ID**
wall/door/glass mounted
- GR Placemaking Graphics**
wall/glass mounted

Signage Requirements - By Others

- Ilumination**
Power Requirement to BMS/Operations
- Data**
Data Requirement to BMS/Operations
- Footings**
In ground

Signs Not Masterplanned - By Others

- OP Operational Signage**
Masterplanned by Brewster Hjorth
- ST Statutory Signage**
Masterplanned by Brewster Hjorth

Issued for Review

Revisions			
A	070624	TH	Issued For Review
B	240624	JS	Issued For Review
C	300724	RK	Issued For Tender
D	100225	RK	Issued For Review
E	180225	RK	Issued For Review

Client

yass valley council
the country the people

Scale As shown at A3

Project

Crago Mill Precinct

Drawing title

Crago Mill Precinct Masterplans
Site – Level G

Drawn TH/CC/RK Checked RP

Date

160223

Job number

YVC001

Drawing number

YVC-SITE-EXT-SN-PLN-0000

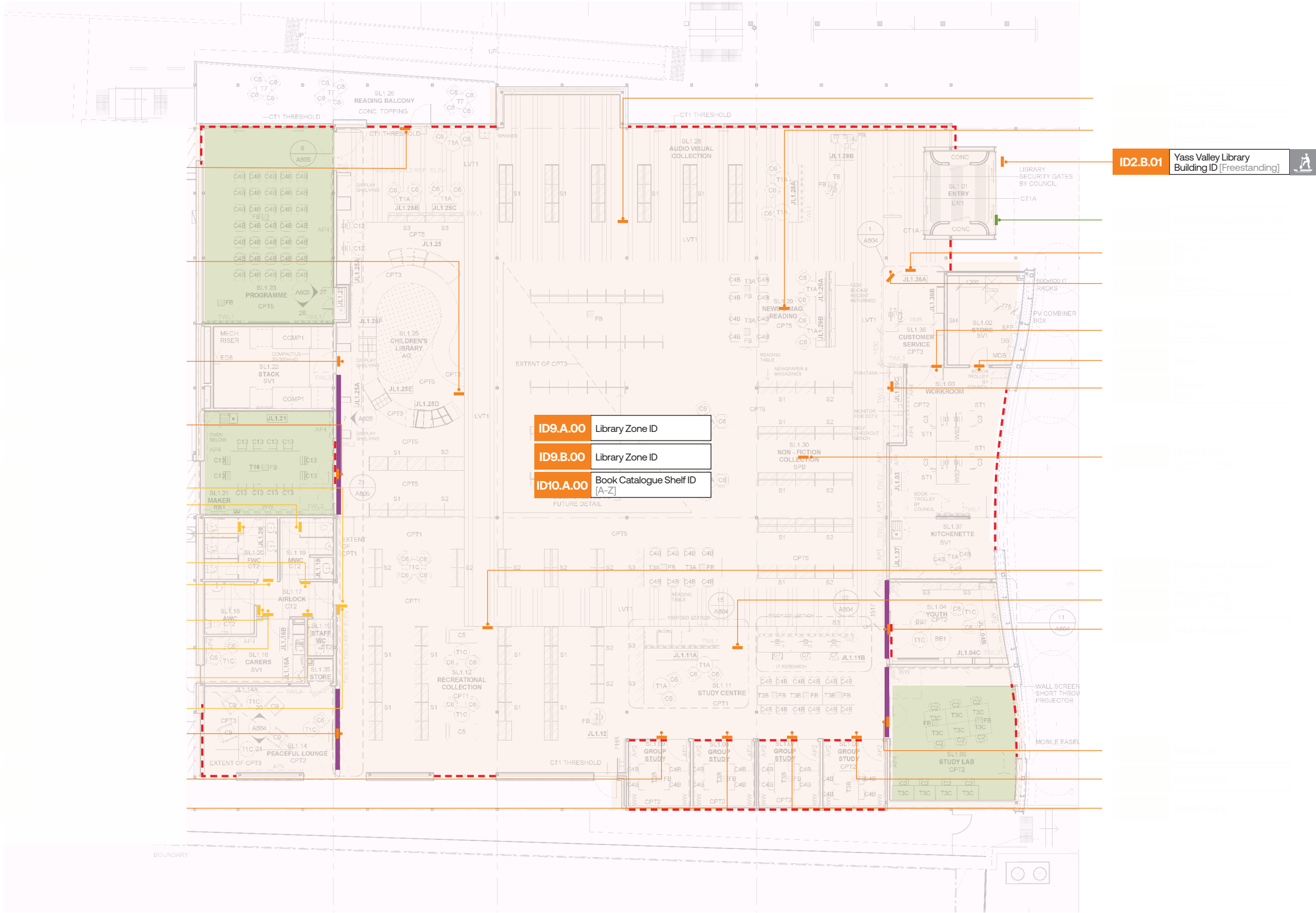
Sign type MP Revision E Sheet size A3

NOT FOR CONSTRUCTION

Reproduction of the whole or part of this document constitutes an infringement of copyright. The information ideas and concepts contained in this document are confidential. The recipient(s) of this document is prohibited from disclosing such information, ideas and concepts to any person without the prior written consent of ExtraBlack Pty Ltd.

Extrablack

Level 5
15 Foster Street
Surry Hills NSW 2010
Australia
T +61 2 8964 6258
extrablack.com.au



Signtypes

- ID Identification**
wall/door/glass mounted
- WF Wayfinding**
freestanding/wall mounted
- AM Amenity ID**
wall/door/glass mounted
- GR Placemaking Graphics**
wall/glass mounted

Signage Requirements - By Others

- ILLUMINATION**
Power Requirement to BMS/Operations
- Data**
Data Requirement to BMS/Operations
- Footings**
In ground

Signs Not Masterplanned - By Others

- OP Operational Signage**
Masterplanned by Brewster Hjorth
- ST Statutory Signage**
Masterplanned by Brewster Hjorth

Issued for Review

Revisions			
A	070624	TH	Issued For Review
B	240624	JS	Issued For Review
C	300724	RK	Issued For Tender
D	100225	RK	Issued For Review
E	180225	RK	Issued For Review

Client

yass valley council
the country the people

Scale As shown at A3

Project

Crago Mill Precinct

Drawing title

Crago Mill Precinct Masterplans
Library – Level G

Drawn TH/CC/RK

Checked

RP

Date

160223

Job number

YVC001

Drawing number

YVC-SITE-EXT-SN-PLN-0000

Sign type MP

Revision E

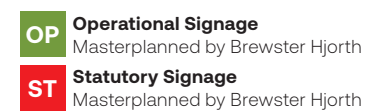
Sheet size A3

NOT FOR CONSTRUCTION

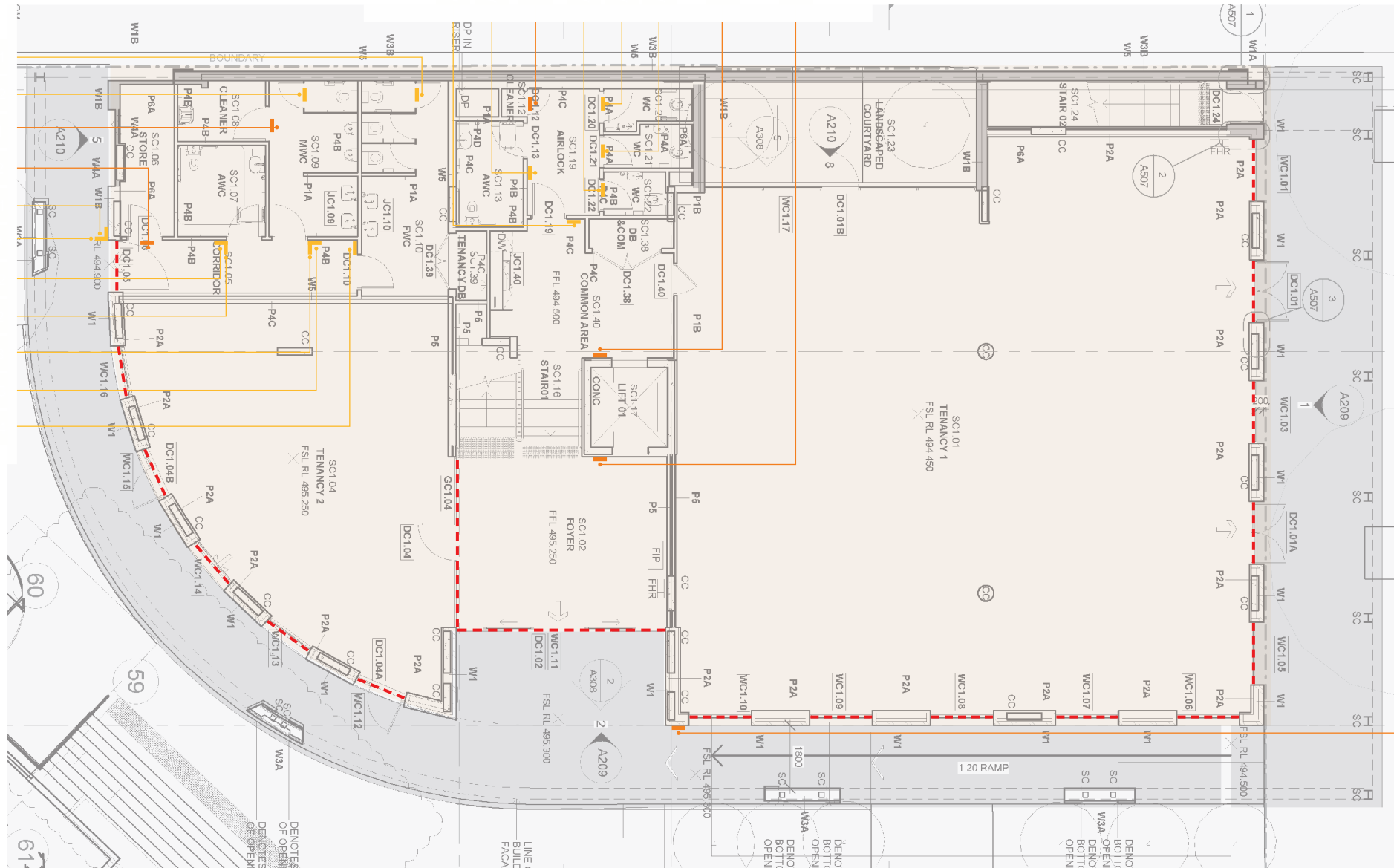
Reproduction of the whole or part of this document constitutes an infringement of copyright. The information ideas and concepts contained in this document are confidential. The recipient(s) of this document is prohibited from disclosing such information, ideas and concepts to any person without the prior written consent of ExtraBlack Pty Ltd.

Extrablack

Level 5
15 Foster Street
Surry Hills NSW 2010
Australia
T +61 2 8964 6258
extrablack.com.au



Level 5
15 Foster Street
Surry Hills NSW 2010
Australia
T +61 2 8964 6258
extrablack.com.au



ID	Identification wall/door/glass mounted
WF	Wayfinding freestanding/wall mounted
AM	Amenity ID wall/door/glass mounted
GR	Placemaking Graphics wall/glass mounted

- Illumination**
Power Requirement to BMS/Operations
- Data**
Data Requirement to BMS/Operations
- Footings**
In ground

- OP Operational Signage**
Masterplanned by Brewster Hjorth
- ST Statutory Signage**
Masterplanned by Brewster Hjorth

Revisions			
A	070624	TH	Issued For Review
B	240624	JS	Issued For Review
C	300724	RK	Issued For Tender
D	100225	RK	Issued For Review
E	180225	RK	Issued For Review

yass valley council
the country the people

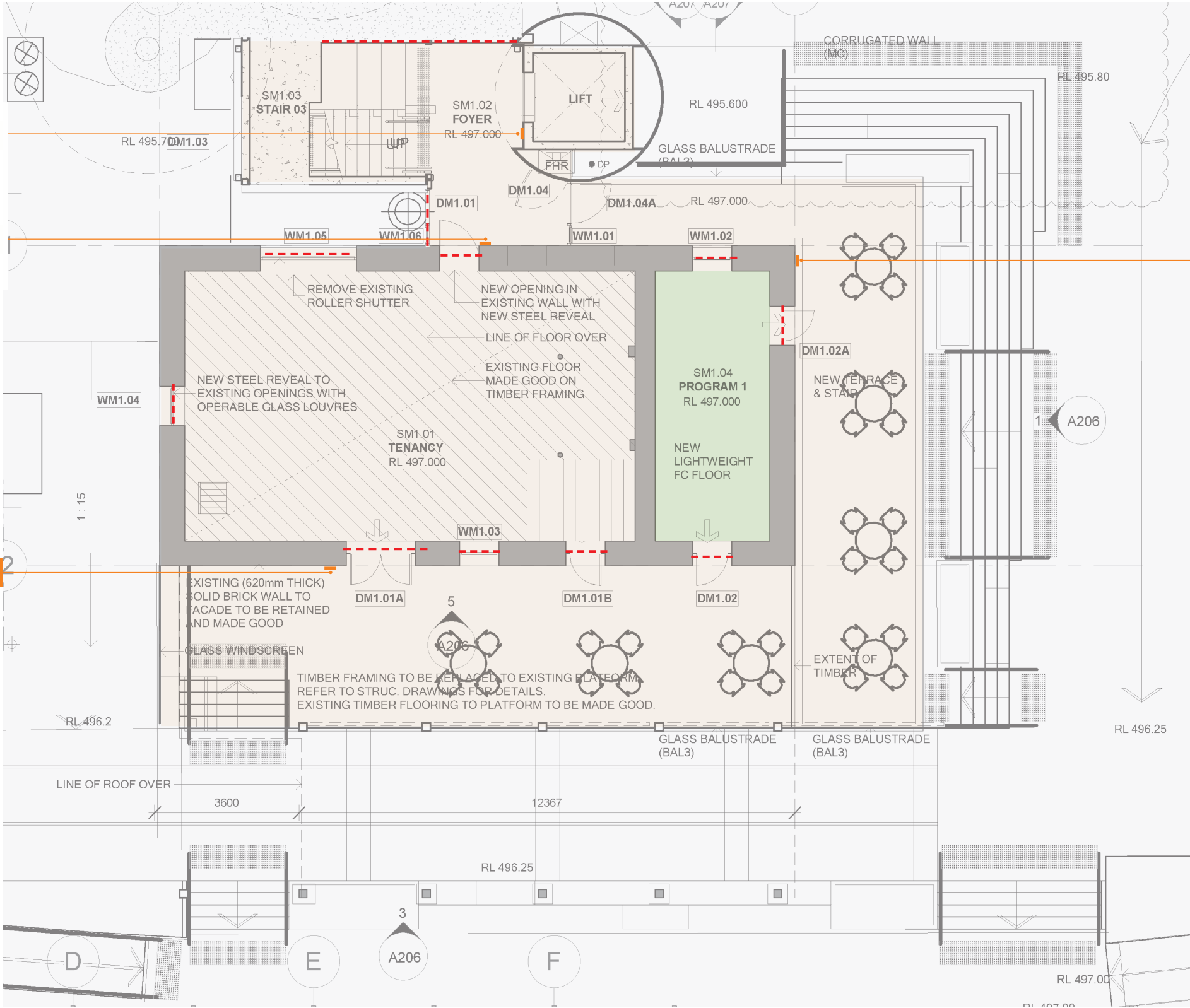
Project
Crago Mill Precinct

Drawn	TH/CC/RK	Checked	RP
--------------	----------	----------------	----

Sign type MP	Revision E	Sheet size A3
---------------------	-------------------	----------------------

Reproduction of the whole or part of this document constitutes an infringement of copyright. The information ideas and concepts contained in this document are confidential. The recipient(s) of this document is prohibited from disclosing such information, ideas and concepts to any person without the prior written consent of ExtraBlack Pty Ltd.

Level 5
15 Foster Street
Surry Hills NSW 2010
Australia
T +61 2 8964 6258
extrablack.com.au



Signtypes

- ID Identification**
wall/door/glass mounted
- WF Wayfinding**
freestanding/wall mounted
- AM Amenity ID**
wall/door/glass mounted
- GR Placemaking Graphics**
wall/glass mounted

Signage Requirements - By Others

- Ilumination**
Power Requirement to BMS/Operations
- Data**
Data Requirement to BMS/Operations
- Footings**
In ground

Signs Not Masterplanned - By Others

- OP Operational Signage**
Masterplanned by Brewster Hjorth
- ST Statutory Signage**
Masterplanned by Brewster Hjorth

Issued for Review

Revisions			
A	070624	TH	Issued For Review
B	240624	JS	Issued For Review
C	300724	RK	Issued For Tender
D	100225	RK	Issued For Review
E	180225	RK	Issued For Review

Client



Scale As shown at A3

Project

Crago Mill Precinct

Drawing title

Crago Mill Precinct Masterplans
Crago Mill Building – Level G

Drawn TH/CC/RK

Checked

RP

Date

160223

Job number

YVC001

Drawing number

YVC-SITE-EXT-SN-PLN-0000

Sign type MP

Revision E

Sheet size A3

NOT FOR CONSTRUCTION

Reproduction of the whole or part of this document constitutes an infringement of copyright. The information ideas and concepts contained in this document are confidential. The recipient(s) of this document is prohibited from disclosing such information, ideas and concepts to any person without the prior written consent of Extrablack Pty Ltd.

Extrablack

Level 5
15 Foster Street
Surry Hills NSW 2010
Australia
T +61 2 8964 6258
extrablack.com.au